



Up to 24.0 SEER2 Rating



Out-of-the-Box

With Product Registration



ABOUT THE COMPANY

The **ARMBRIDGE** brand was born and established to deliver high-quality HVAC units to the market. **ARMBRIDGE** stands out as an exceptional solution, offering top-notch HVAC units tailored and a full set of HVAC accessories for Distributors, Contractors, and Technicians across the United States.

Strategically located warehouses nationwide and a dedicated technical support team enable us to ensure superior product quality and unparalleled customer service. At **ARMBRIDGE**, we extend an “arm” to support our partners, serving as a bridge that connects them to the best solutions and we always go the extra mile.



Armbridge Units come with SMART SYNC Built-In, allowing you to use your Smart device to control your unit from anywhere.



Single and Multi-Zone System

AHU Heat Pump System

ARMBRIDGE ADVANTAGE

UNLOCK YOUR SYSTEM'S FULL POTENTIAL WITH REGISTRATION

At **ARMBRIDGE**, we believe success is stronger when it is shared. Completing the registration process for your HVAC unit offers several key benefits that give you a competitive edge with homeowners:

Extended Warranty Protection: Extend your warranty to 10 years for your compressor and 10 years for parts. Failing to register often defaults you to a much shorter, limited warranty.


Transferable Value: A registered, active warranty can often benefit homebuyers by potentially increasing their home's resale value. A great selling point for contractors and technicians.

Priority Notifications: Registration ensures the manufacturer has your contact details to immediately alert you to any critical product updates or rare safety recalls, so you don't have to find the news on your own.

Faster Service Verification: Having your unit in the manufacturer's system makes it significantly easier and faster for technicians to verify your coverage when you need repairs.

**FOR HOMEOWNERS, THESE BADGES MEAN CONFIDENCE.
FOR DEALERS, THEY MEAN OPPORTUNITY.**





SINGLE-ZONE

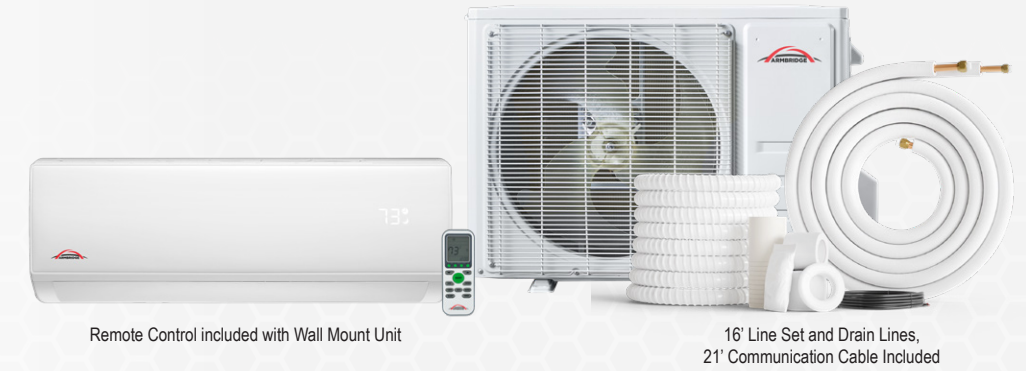
MINI SPLIT HEAT PUMP SYSTEM



Features:

- High-efficiency Inverter Technology for consistent comfort and energy savings
- Uses environmentally friendly R32 refrigerant for improved performance
- AHRI and ETL listed
- Wide operating range for reliable heating and cooling performance
- Advanced airflow control for even temperature distribution
- Smart Sync Built-In
- Flexible indoor installation options: Wall-Mounted, Ceiling Cassette, and Slim Duct
- **16' Line Set and Drain Lines, 21' Communication Cable Included**

Wall Mount:



Indoor

Indoor Model			AB-TS12WM-115VI	AB-TS09WM-230VI	AB-TS12WM-230VI	AB-TS18WM-230VI	AB-TS24WM-230VI	AB-TS36WM-230VI
Power Supply	V-Ph-Hz		115-1-60	208-230-1-60	208-230-1-60	208-230-1-60	208-230-1-60	208-230-1-60
Cooling	Capacity	Btu/h	11,500	9,000	12,000	18,000	24,000	36,000
	Capacity	Btu/h	11,500	10,000	12,000	18,000	24,000	36,000
Indoor Air Flow (Turbo/Hi/Mi/Lo/Si)	CFM		276/265/241/224/206	335/312/282/265/241	342/270/235/200/152	524/453/365/288/259	647/575/517/423/382	847/705/588/470/412
Indoor Noise Level (Turbo/Hi/Mi/Lo/Si)	dB(A)		43/40/36/33/29	42/39/34/30/28	45/42/35/30/28	49/46/40/34/32	51/49/43/37/34	54/51/45/39/37
Indoor Unit	Dimensions (WxDxH)	in	30.59x7.91x9.84	31.93x7.99x11.5	31.93x7.8x11.5	35.83x8.11x11.57	39.76x8.66x12.4	46.89x10.16x14.17
	Packing (WxDxH)	in	33.07x10.23x12.40	34.84x10.83x14.41	34.84x10.83x14.41	38.54x10.91x14.65	43.15x11.69x15.35	49.61x12.91x16.93
	Net/Gross Weight	lbs.	16.5 / 20.94	18.7 / 24.3	18.7 / 24.3	21.4 / 27.6	26.5 / 33.7	26.5 / 48.5
Refrigerant Piping	Liquid Side / Gas Side	in	1/4" / 3/8"	1/4" / 3/8"	1/4" / 3/8"	1/4" / 3/8"	1/4" / 1/2"	1/4" / 5/8"
Ambient Temperature Range	Cooling	°F	≥62	63-90	63-90	63-90	63-90	63-90
	Heating	°F	≤86	32-81	32-81	32-81	32-81	32-81

Outdoor

Outdoor Model			AB-TS12LS-115VO	AB-TS09LS-230VO	AB-TS12LS-230VO	AB-TS18LS-230VO	AB-TS24LS-230VO	AB-TS36LS-230VO
Power Supply	V-Ph-Hz		115-1-60	208-230-1-60	208-230-1-60	208-230-1-60	208-230-1-60	208-230-1-60
Cooling	Capacity Range Max	Btu/h	2050-12000	3400-13500	2000-13900	5100-19000	5100-26000	7500-36000
	Rated Current	A	10.38	4.5	5.4	7.9	9.8	16.4
	EER2		9.5	12.5	9.5	9.5	10.5	9.5
	SEER2		17	21.0	20.0	20.0	20.0	20.0
Heating	Capacity Range Max	Btu/h	2050-12500	3400-13500	2000-13900	5100-19000	5100-26000	7500-36000
	Rated Current	A	8.78	3.7	4.9	7.2	10.7	15.4
	COP	W/W	3.3	3.6	3.3	3.2	2.8	3.1
	HSPF4		9.5	9.5	10	10	9.5	9.5
	HSPF5		8.1	8.1	8.5	8.5	8.1	8.1
Min. Circuit Ampacity	A	18	10	11	13	20	22	
Max Fuse	A	25	15	15	20	30	35	
Outdoor Noise Level	dB(A)	53	53	55	55	60	63	
Outdoor Unit	Dimensions (WxDxH)	in	30.98x11.41x19.60	30.98x11.42x19.61	31.5x12.01x21.69	33.54x13.74x23.7	36.1x14.76x27.56	38.5x16.57x31.61
	Packing (WxDxH)	in	32.2x12.8x20.28	32.2x12.8x20.28	32.87x13.39x23.03	35.04x15.16x24.72	37.4x16.54x28.82	40.24x18.9x31.93
	Net / Gross Weight	lbs.	46.3 / 54.01	50.7 / 57.3	51.8 / 58.4	66.8 / 74.5	88.2 / 97.0	106.9 / 115.7
Refrigerant Type / Pre-charge	oz	R32 / 17.63	R32 / 21.16	R32 / 20.46	R32 / 37.74	R32 / 42.33	R32 / 55.73	
Refrigerant Pre-charge Length	ft.	25	25	25	25	25	25	
Additional refrigerant charge >25ft.	oz/ft.	0.11	0.11	0.11	0.11	0.11	0.11	
Refrigerant Piping	Liquid Side / Gas Side	in	1/4" / 3/8"	1/4" / 3/8"	1/4" / 3/8"	1/4" / 3/8"	1/4" / 1/2"	1/4" / 5/8"
Maximum Line Length	ft.	50	50	50	65	65	98	
Maximum Height Difference Between Indoor and Outdoor	ft.	33	33	33	49	49	65	
Ambient Temperature Range	Cooling	°F	5-127	5-127	5-127	5-127	5-127	5-127
	Heating	°F	5-86	-4-75	-4-75	-4-75	-4-75	-4-75

Ceiling Cassette:

360° Airflow



AB-PNL09-18CT
25.59×25.59×1.18 in.
Panel Net Weight: 6.0 lb

AB-PNL24CT
37.4×37.4×1.3 in.
Panel Net Weight: 13.2 lb

(Panel Sold Separately)



Wall Thermostat included with Ceiling Cassette Unit

16' Line Set and Drain Lines,
21' Communication Cable Included

Indoor

Indoor Model		AB-TS09CT-230VI	AB-TS12CT-230VI	AB-TS18CT-230VI	AB-TS24CT-230VI	
Panel Model Number (Sold Separately)		AB-PNL09-18CT	AB-PNL09-18CT	AB-PNL09-18CT	AB-PNL24CT	
Power Supply	V-Ph-Hz	208-230-1-60	208-230-1-60	208-230-1-60	208-230-1-60	
Cooling	Capacity	Btu/h	9,000	12,000	18,000	24,000
Heating	Capacity	Btu/h	9,000	12,000	18,500	24,000
Indoor Air Flow (Turbo/Hi/Mi/Lo/Si)	CFM	329/300/270/217/194	360/320/260/200/190	441/394/335/282/253	836/765/630/530/482	
Indoor Noise Level (Turbo/Hi/Mi/Lo/Si)	dB(A)	43/41/37/33/32	45/43/39/35/32	48/46/42/39/37	51/48/44/40/37	
Indoor Unit	Dimensions (WxDxH)	in	22.44×22.44×10.24	22.44×22.44×10.24	22.44×22.44×10.24	32.99×32.99×10
	Packing (WxDxH)	in	28.27×25.87×11.85	28.27×25.87×11.85	28.27×25.87×11.85	36.81×36.81×11.42
	Net / Gross Weight	lbs.	31.9 / 38.6	31.9 / 38.6	31.9 / 38.6	51.8 / 59.5
Panel	Dimensions (WxDxH)	in	25.59×25.59×1.18	25.59×25.59×1.18	25.59×25.59×1.18	37.4×37.4×1.3
	Packing (WxDxH)	in	28.94×28.94×4.33	28.94×28.94×4.33	28.94×28.94×4.33	41.54×41.54×3.54
	Net / Gross Weight	lbs.	6.0 / 9.5	6.0 / 9.5	6.0 / 9.5	13.2 / 19.8
Refrigerant Piping	Liquid Side / Gas Side	in	1/4" / 3/8"	1/4" / 3/8"	1/4" / 3/8"	1/4" / 1/2"
Ambient Temperature Range	Cooling	°F	62-89	62-89	62-89	62-89
	Heating	°F	32-86	32-86	32-86	32-86

Outdoor

Outdoor Model		AB-TS09LS-230VO	AB-TS12LS-230VO	AB-TS18LS-230VO	AB-TS24LS-230VO	
Power Supply	V-Ph-Hz	208-230-1-60	208-230-1-60	208-230-1-60	208-230-1-60	
Cooling	Capacity Min ~ Max	Btu/h	2000~10400	2000~13600	6000~19400	7550~25200
	Rated Current	A	3.3	4.3	5.9	8.7
	EER2		11.0	9.5	9.5	9.5
	SEER2		20.0	20.0	20.0	20.0
	SEER2		20.0	20.0	20.0	20.0
Heating	Capacity Min ~ Max	Btu/h	2500~12500	3100~12700	4000~21400	8700~28300
	Rated Current	A	3.1	4.2	7.1	8.5
	COP	W/W	3.8	3.5	2.9	3.5
	HSPF4		9.5	9.5	9.5	9.5
	HSPF5		9.0	8.9	7.4	9.4
Min. Circuit Ampacity	A	10	11	12	17	
Max Fuse	A	15	15	20	25	
Outdoor Noise Level	dB(A)	53	55	55	60	
Outdoor Unit	Dimensions (WxDxH)	in	30.98×11.42×19.61	31.5×12.01×21.69	33.54×13.74×23.7	36.1×14.76×27.56
	Packing (WxDxH)	in	32.2×12.8×20.28	32.87×13.39×23.03	35.04×15.16×24.72	37.4×16.54×28.82
	Net / Gross Weight	lbs.	50.7 / 57.3	51.8 / 58.4	66.8 / 74.5	88.2 / 97.0
Refrigerant Type / Pre-charge	oz	R32 / 21.16	R32 / 20.46	R32 / 37.74	R32 / 42.33	
Refrigerant Pre-charge Length	ft.	25	25	25	25	
Additional refrigerant charge >25ft.	oz/ft.	0.11	0.11	0.11	0.11	
Refrigerant Piping	Liquid Side / Gas Side	in	1/4" / 3/8"	1/4" / 3/8"	1/4" / 3/8"	1/4" / 1/2"
Maximum Line Length	ft.	49	49	65	65	
Max Height Diff Between Indoor and Outdoor	ft.	33	33	49	49	
Ambient Temperature Range	Cooling	°F	5-127	5-127	5-127	5-127
	Heating	°F	-4~75	-4~75	-4~75	-4~75

Slim Duct:



Wall Thermostat included with Slim Duct Unit



16' Line Set and Drain Lines,
21' Communication Cable Included

Indoor

Indoor Model		AB-TS09DT-230VI	AB-TS12DT-230VI	AB-TS18DT-230VI	AB-TS24DT-230VI	
Power Supply	V-Ph-Hz	208-230-1-60	208-230-1-60	208-230-1-60	208-230-1-60	
Cooling	Capacity	Btu/h	9,000	12,000	18,000	24,000
Heating	Capacity	Btu/h	10,000	12,000	18,500	24,000
Indoor Air Flow (Turbo/Hi/Mi/Lo/Si)	CFM	335/305/276/182/182	360/330/270/217/194	500/426/370/300/283	741/623/558/529/470	
Indoor Noise Level (Turbo/Hi/Mi/Lo/Si)	dB(A)	42/39/34/28/28	42/39/34/28/28	48/44/41/36/33	51/49/46/39/34	
Indoor Unit	Dimensions (WxDxH)	in	27.56×17.8×7.87	27.56×17.8×7.87	36.22×17.8×7.87	43.31×17.8×7.87
	Packing (WxDxH)	in	35.43×21.85×9.84	35.43×21.85×9.84	44.09×21.85×9.84	50.79×22.24×9.65
	Net / Gross Weight	lbs.	33.1 / 39.7	33.1 / 39.7	39.7 / 47.4	50.7 / 58.4
Refrigerant Piping	Liquid Side / Gas Side	in	1/4" / 3/8"	1/4" / 3/8"	1/4" / 3/8"	1/4" / 1/2"
Ambient Temperature Range	Cooling	°F	62-89	62-89	62-89	62-89
	Heating	°F	32-86	32-86	32-86	32-86

Outdoor

Outdoor Model		AB-TS09LS-230VO	AB-TS12LS-230VO	AB-TS18LS-230VO	AB-TS24LS-230VO	
Power Supply	V-Ph-Hz	208-230-1-60	208-230-1-60	208-230-1-60	208-230-1-60	
Cooling	Capacity Min ~ Max	Btu/h	2000~10400	2000~12300	6000~19400	7550~24600
	Rated Current	A	3.2	4.1	6.3	8.1
	EER2		11.0	9.5	9.5	9.5
	SEER2		20.0	20.0	20.0	20.0
	SEER2		20.0	20.0	20.0	20.0
Heating	Capacity Min ~ Max	Btu/h	2500~12300	3100~12300	4000~21400	8700~28500
	Rated Current	A	3.5	4.5	7.8	8.8
	COP	W/W	3.8	3.5	2.9	3.5
	HSPF4		9.5	9.5	9.5	9.5
	HSPF5		8.8	7.3	9.2	8.8
Min. Circuit Ampacity	A	10	11	12	17	
Max Fuse	A	15	15	20	25	
Outdoor Noise Level	dB(A)	53	55	55	60	
Outdoor Unit	Dimensions (WxDxH)	in	30.98×11.42×19.61	31.5×12.01×21.69	33.54×13.74×23.7	36.1×14.76×27.56
	Packing (WxDxH)	in	32.2×12.8×20.28	32.87×13.39×23.03	35.04×15.16×24.72	37.4×16.54×28.82
	Net / Gross Weight	lbs.	50.7 / 57.3	51.8 / 58.4	66.8 / 74.5	88.2 / 97.0
Refrigerant Type / Pre-charge	oz	R32 / 21.16	R32 / 20.46	R32 / 37.74	R32 / 42.33	
Refrigerant Pre-charge Length	ft.	25	25	25	25	
Additional refrigerant charge >25ft.	oz/ft.	0.11	0.11	0.11	0.11	
Refrigerant Piping	Liquid Side / Gas Side	in	1/4" / 3/8"	1/4" / 3/8"	1/4" / 3/8"	1/4" / 1/2"
Maximum Line Length	ft.	49	49	65	65	
Max Height Diff Between Indoor and Outdoor	ft.	33	33	49	49	
Ambient Temperature Range	Cooling	°F	5-127	5-127	5-127	5-127
	Heating	°F	-4~75	-4~75	-4~75	-4~75

SINGLE-ZONE MULTI-POSITION AIR HANDLER

HEAT PUMP SYSTEM

**Perfect for replacement.
Cross compatible with any
3rd party 24V unit**



24V Wall Thermostat may be purchased separately

Features:

- High-efficiency Inverter Technology for consistent comfort and energy savings
- Uses environmentally friendly R32 refrigerant for improved performance
- 4-position flexible installation
- AHRI and ETL listed
- GoldFin A-Coil
- Compatible with 3rd party Electric heater kits 5, 8, 10, 15, 20 kW
- Compatible with 3rd party 24V Wall Thermostat
- Cross compatible with any 3rd party 24V unit



AHU

Indoor Model		AB-MP18AHU-230VI	AB-MP24AHU-230VI	AB-MP36AHU-230VI	AB-MP48AHU-230VI	AB-MP60AHU-230VI	
Power Supply	V-Ph-Hz	208-230-1-60	208-230-1-60	208-230-1-60	208-230-1-60	208-230-1-60	
Cooling	Rated Capacity	Btu/h	18,000	24,000	36,000	48,000	53,000
Heating	Rated Capacity	Btu/h	19,000	26,000	36,000	48,000	55,000
Indoor fan motor	Type		ECM	ECM	ECM	ECM	ECM
	Output	W	75	75	150	150	150
Max Fuse	A	6.0	6.0	6.0	6.0	6.0	
Indoor Air Flow (High/Low)	CFM	650 / 420	830 / 420	1110 / 520	1690 / 750	1740 / 750	
Indoor Noise Level (High/Low)	dB(A)	38.5 / 34	42 / 38	50 / 42.5	53 / 46	53 / 46	
Indoor Unit	Dimensions (WxDxH)	in	17.52 × 21.02 × 45.00	17.52 × 21.03 × 45.00	21.03 × 21.03 × 49.22	24.48 × 21.03 × 52.98	24.48 × 21.03 × 52.98
	Packing (WxDxH)	in	20.87 × 26.57 × 46.26	20.86 × 26.58 × 46.27	24.41 × 26.58 × 50.20	27.88 × 26.58 × 54.14	27.88 × 26.58 × 54.14
	Net/Gross Weight	lbs.	84 / 92	84 / 92	132 / 140	152 / 160	152 / 160
Refrigerant Piping	Liquid Side / Gas Side	in	3/8" / 3/4"	3/8" / 3/4"	3/8" / 3/4"	3/8" / 3/4"	3/8" / 3/4"
Ambient Temperature Range	Cooling	°F	60-90	60-90	60-90	60-90	60-90
	Heating	°F	60-90	60-90	60-90	60-90	60-90

Outdoor

Outdoor Model		AB-SD18HI-230VO	AB-SD24HI-230VO	AB-SD36HI-230VO	AB-SD48HI-230VO	AB-SD60HI-230VO	
Power Supply	V-Ph-Hz	208-230-1-60	208-230-1-60	208-230-1-60	208-230-1-60	208-230-1-60	
Cooling	Rated Capacity	Btu/h	18,000	24,000	36,000	48,000	53,000
	EER2	Btu/h	11.5	10.4	10.4	9	8
	SEER2	Btu/h	18.4	17.7	17.0	16.5	15.8
Heating	Rated Capacity	Btu/h	19,000	26,000	36,000	48,000	55,000
	HSPF2	Btu/h	8.6	8.5	8.4	8.5	8.5
	COP	W/W	3.85	3.4	3.45	3.45	3.55
Compressor	Type		rotary	rotary	rotary	rotary	rotary
	Rated current(RLA)	A	6.80	9.45	9.45	5.25	5.25
	Cpacity	W	1115	2085	2085	2680	2680
	Rated current	A	6.80	9.45	9.45	5.25	5.25
Outdoor fan motor RLA	A	2.00	2.00	2.50	2.50	2.50	
Outdoor Unit	Dimensions (WxDxH)	in	36.03 × 25.59 × 13.58	36.03 × 25.59 × 13.58	37.98 × 31.89 × 15.75	37.98 × 31.89 × 15.75	37.98 × 31.89 × 15.75
	Packing (WxDxH)	in	40.16 × 28.94 × 17.13	40.16 × 28.94 × 17.13	42.13 × 34.64 × 20.67	42.13 × 34.64 × 20.67	42.13 × 34.64 × 20.67
	Net/Gross Weight	lbs.	84 / 92	84 / 92	132 / 140	152 / 160	152 / 160
Refrigerant System	Type		R32	R32	R32	R32	R32
	Pre-charge	oz	56.44	58.2	84.66	105.82	105.82
	Liquid Side / Gas Side	in	3/8" / 3/4"	3/8" / 3/4"	3/8" / 3/4"	3/8" / 3/4"	3/8" / 3/4"
	Max. Refrigerant Pipe Length	ft.	98.4	164	246	246	246
	Max. Different Level	ft.	65.6	82	98.4	98.4	98.4
Max Fuse	A	6.0	6.0	6.0	6.0	6.0	
Outdoor Air Flow	CFM	2000	2000	2650	2950	2950	
Outdoor Noise Level (High)	dB(A)	54	55	56	60	60	
Ambient Temperature Range	Cooling	°F	5-131	5-131	5-131	5-131	5-131
	Heating	°F	-4-75	-4-75	-4-75	-4-75	-4-75



MULTI-ZONE

MINI SPLIT HEAT PUMP SYSTEM



Indoor Units:

Ceiling Cassette:



Indoor Model			AB-GTM09CT-230VI	AB-GTM12CT-230VI	AB-GTM18CT-230VI	AB-GTM24CT-230VI
Panel Model Number (Sold Separately)			AB-PN9-18CT	AB-PN9-18CT	AB-PN9-18CT	AB-PN24CT
Power Supply	V-Ph-Hz		208-230-1-60	208-230-1-60	208-230-1-60	208-230-1-60
Cooling	Capacity	Btu/h	9,000	12,000	18,000	24,000
Heating	Capacity	Btu/h	10,000	12,000	18,500	24,000
Max Fuse		A	5	5	5	5
Indoor Air Flow		CFM	383	383	442	824
Indoor Noise Level		dB(A)	40	40	45	47
Indoor Unit	Dimensions (WxDxH)	in	22.44x22.44x10.24	22.44x22.44x10.24	22.44x22.44x10.24	33.07x33.07x9.69
	Packing (WxDxH)	in	28.35x25.59x11.42	28.35x25.59x11.42	28.35x25.59x11.42	35.83x35.83x12.20
	Net Weight	lbs.	30.9/37.5	30.9/37.5	33.1/38.6	52.9/61.7
Panel	Dimensions (WxDxH)	in	25.59x25.59x2.17	25.59x25.59x2.17	25.59x25.59x2.17	37.40x37.40x2.17
	Packing (WxDxH)	in	27.95x27.95x3.15	27.95x27.95x3.15	27.95x27.95x3.15	39.37x39.37x3.94
	Net/Gross Weight	lbs.	4.9/8.2	4.9/8.2	4.9/8.2	11.7/17.2
Refrigerant Piping	Liquid Side / Gas Side	in	1/4" / 3/8"	1/4" / 3/8"	1/4" / 1/2"	1/4" / 5/8"
Ambient Temperature Range		°F	61-90	61-90	61-90	61-90

Ceiling Cassette Panels:

Cassette Panels sold separately



AB-PN9-18CT
 Panel Dimension:
 25.59x25.59x2.17 in.
 Panel Net Weight: 4.9 lb.



AB-PN24CT
 Panel Dimension:
 37.40x37.40x2.17 in.
 Panel Net Weight: 11.7 lb.

Controls:



- Remote Control Included for all units.
- Wall Thermostat Included for Slim Duct, Ceiling Cassette, Floor Ceiling and One Way Cassette Units only.

Wall Mount:

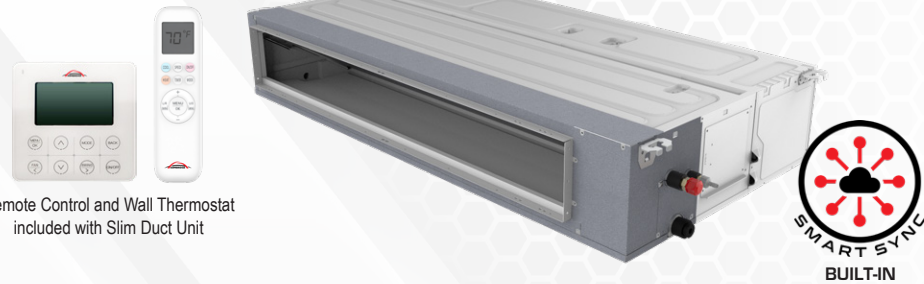


Remote Control included with Wall Mount Unit



Indoor Model			AB-GTM07WM-230VI	AB-GTM09WM-230VI	AB-GTM12WM-230VI	AB-GTM18WM-230VI	AB-GTM24WM-230VI
Power Supply	V-Ph-Hz		208-230-1-60	208-230-1-60	208-230-1-60	208-230-1-60	208-230-1-60
Cooling	Capacity	Btu/h	7,000	9,000	12,000	17,000	24,000
Heating	Capacity	Btu/h	7,000	9,000	12,300	17,700	24,000
Max Fuse	A		5	5	5	5	5
Indoor Air Flow	CFM		353	353	353	618	765
Indoor Noise Level	dB(A)		40	40	42	49	50
Indoor Unit	Dimensions (WxDxH)	in	31.02x7.80x11.50	31.02x7.80x11.50	34.49x11.73x7.64	38.82x8.86x12.40	44.13x9.09x12.95
	Packing (WxDxH)	in	34.65x14.57x11.42	34.65x14.57x11.42	37.99x14.57x11.1	42.13x15.16x12.28	47.64x15.75x12.87
	Net/Gross Weight	lbs.	17.60/22.00	17.60/22.00	19.80/24.27	26.45/32.26	33.07/39.68
Refrigerant Piping	Liquid Side / Gas Side	in	1/4" / 3/8"	1/4" / 3/8"	1/4" / 3/8"	1/4" / 1/2"	1/4" / 5/8"
Ambient Temperature Range	°F		61-90	61-90	61-90	61-90	61-90

Slim Duct:

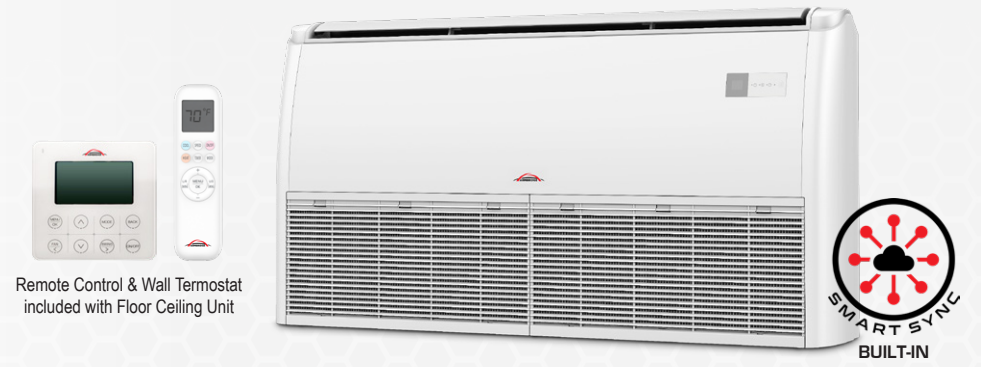


Remote Control and Wall Thermostat included with Slim Duct Unit



Indoor Model			AB-GTM09DT-230VI	AB-GTM12DT-230VI	AB-GTM18DT-230VI	AB-GTM24DT-230VI
Power Supply	V-Ph-Hz		208-230-1-60	208-230-1-60	208-230-1-60	208-230-1-60
Cooling	Capacity	Btu/h	9,000	12,000	18,000	24,000
Heating	Capacity	Btu/h	10,000	12,000	19,000	24,600
Max Fuse	A		5	5	5	5
Indoor Air Flow	CFM		353	353	530	795
Indoor Noise Level	dB(A)		34	34	39	42
Indoor Unit	Dimensions (WxDxH)	in	27.56x17.72x7.8	27.56x17.72x7.8	27.56x27.56x9.65	39.37x27.56x9.65
	Packing (WxDxH)	in	34.25x21.3x10.24	34.25x21.3x10.24	36.61x32.68x11.81	48.43x32.68x11.81
	Net/Gross Weight	lbs.	27.6/33.1	27.6/33.1	47.4/56.2	59.5/70.5
Refrigerant Piping	Liquid Side / Gas Side	in	1/4" / 3/8"	1/4" / 3/8"	1/4" / 1/2"	1/4" / 5/8"
Ambient Temperature Range	°F		61-90	61-90	61-90	61-90

Floor Ceiling:

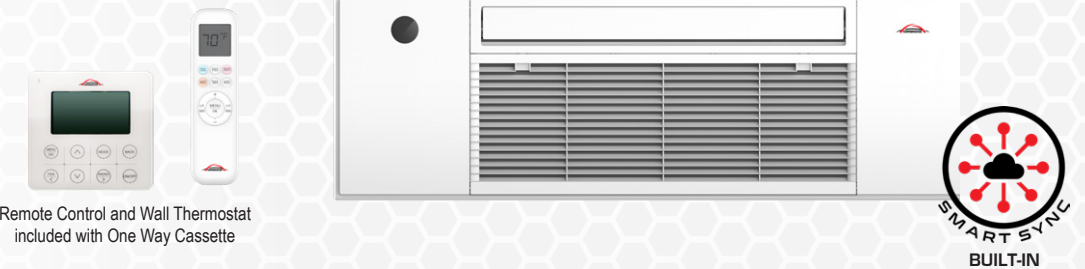


Remote Control & Wall Thermostat included with Floor Ceiling Unit



Indoor Model			AB-GTM09FC-230VI	AB-GTM12FC-230VI	AB-GTM18FC-230VI	AB-GTM24FC-230VI
Power Supply	V-Ph-Hz		208-230-1-60	208-230-1-60	208-230-1-60	208-230-1-60
Cooling	Capacity	Btu/h	9,000	12,000	18,000	24,000
Heating	Capacity	Btu/h	11,000	12,000	18,000	24,000
Max Fuse	A		5	5	5	5
Indoor Air Flow	CFM		500	500	530	824
Indoor Noise Level	dB(A)		39	39	41	44
Indoor Unit	Dimensions (WxDxH)	in	39.37x27.17x9.25	39.37x27.17x9.25	39.37x27.17x9.25	50.39x27.17x9.25
	Packing (WxDxH)	in	42.52x30.32x12.80	42.52x30.32x12.80	42.52x30.32x12.80	53.54x30.32x12.80
	Net/Gross Weight	lbs.	57.3/67.2	57.3/67.2	59.5/69.5	71.7/83.8
Refrigerant Piping	Liquid Side / Gas Side	in	1/4" / 3/8"	1/4" / 3/8"	1/4" / 1/2"	1/4" / 5/8"
Ambient Temperature Range	°F		61-90	61-90	61-90	61-90

One-Way Cassette:



Remote Control and Wall Thermostat included with One Way Cassette



Indoor Model			AB-GTM09CT1W-230VI	AB-GTM12CT1W-230VI	AB-GTM18CT1W-230VI
Power Supply	V-Ph-Hz		208-230-1-60	208-230-1-60	208-230-1-60
Cooling	Capacity	Btu/h	9,000	12,000	18,000
Heating	Capacity	Btu/h	12,000	14,800	18,600
Max Fuse	A				
Indoor Air Flow (Turbo/Hi/Med/Lo)	CFM		388/341/259/200	405/352/282/212	435/376/347/229
Indoor Noise Level (Turbo/Hi/Med/Lo)	dB(A)		44/38/35/32	45/40/36/32	48/44/39/33
Indoor Unit	Dimensions (WxDxH)	in	39.0x13.4x7.7	39.0x13.4x7.7	39.0x13.4x7.7
	Packing (WxDxH)	in	51.4x16.3x11.0	51.4x16.3x11.0	51.4x16.3x11.0
	Net/Gross Weight	lbs.	34.5/40.5	34.5/40.5	35.0/41.0
	Panel Panel Dimensions (WxDxH)	in	51.1x16.5x1.2	51.1x16.5x1.2	51.1x16.5x1.2
	Panel Packing Dimensions (WxDxH)	in	53.5x18.9*4.5	53.5x18.9*4.5	53.5x18.9*4.5
	Panel Net/Gross Weight	lbs.	8.5/12.0	8.5/12.0	8.5/12.0
Refrigerant Piping	Liquid Side / Gas Side	in	1/4" / 3/8"	1/4" / 3/8"	1/4" / 1/2"
Ambient Temperature Range	°F		61-90	61-90	61-90

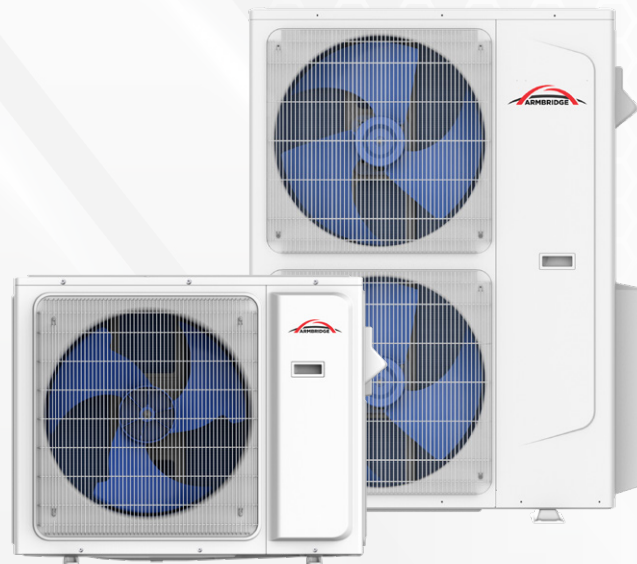
Outdoor Units:

Regular

Outdoor Model			AB-GTMR18-230VO	AB-GTMR24-230VO	AB-GTMR30-230VO	AB-GTMR36-230VO	AB-GTMR42-230VO
Power Supply	V-Ph-Hz		208~230-1-60	208~230-1-60	208~230-1-60	208~230-1-60	208~230-1-60
Cooling	Capacity (Min-Max)	Btu/h	17,700 (3,800-19,800)	24,000 (4,900-31,400)	30,000 (6,000-38,200)	36,000 (6,350-38,500)	42,000 (8,350-46,000)
	EER2	Btu/h	3.60	3.66	3.66	3.60	3.66
	SEER2	Btu/h	22	23	23	23	24
Heating	Capacity (Min-Max)	Btu/h	18,000 (4,200-22,000)	24,000 (5,200-32,000)	30,000 (6,300-36,000)	36,000 (7,000-43,000)	42,000 (8,450-53,000)
	HSPF2-4	Btu/h	10	10	10	10	10.5
	COP2	W/W	3.8	4.0	3.9	4.0	3.9
Outdoor Air Flow	CFM		1529	2235	2353	2353	4235
Outdoor Side Noise Level	dB(A)		54	57	58	59	60
Outdoor Unit	Dimensions (WxDxH)	in	34.65x13.90x21.93	38.58x15.28x27.56	41.18x17.91x31.81	41.18x17.91x31.81	39.80x15.75x51.97
	Packing (WxDxH)	in	35.55x15.04x24.21	39.96x16.73x30.00	43.50x19.49x34.84	43.50x19.49x34.84	42.52x16.93x56.69
	Net Weight	lbs.	75.0/80.5	102.5/109.1	148.8/157.6	154.3/163.1	205.0/224.9
Refrigerant Type / Pre-charge Volume	oz		R32/38.8	R32/51.2	R32/67.0	R32/81.2	R32/ 105.8
Refrigerant Piping	Liquid Side / Gas Side	in	1/4" / 3/8"	1/4" / 3/8"	1/4" / 3/8"	1/4" / 3/8"	1/4" / 3/8"
	Max Refrigerant Pipe Length Indoor/Total	ft.	82/131	98/197	115/263	115/263	115/263
Ambient Temperature	Outdoor (Cooling)	°F	-13~ 126	-13~ 126	-13~ 126	-13~ 126	-13~ 126
	Outdoor (Heating)	°F	-13~ 75	-13~ 75	-13~ 75	-13~ 75	-13~ 75

Regular Units:

Up to 5 **ARMBRIDGE** Indoor Multi-Zone Units can be connected to a single outdoor unit, reducing the number of outdoor units required. All indoor units can be controlled individually and do not need to be installed at the same time.

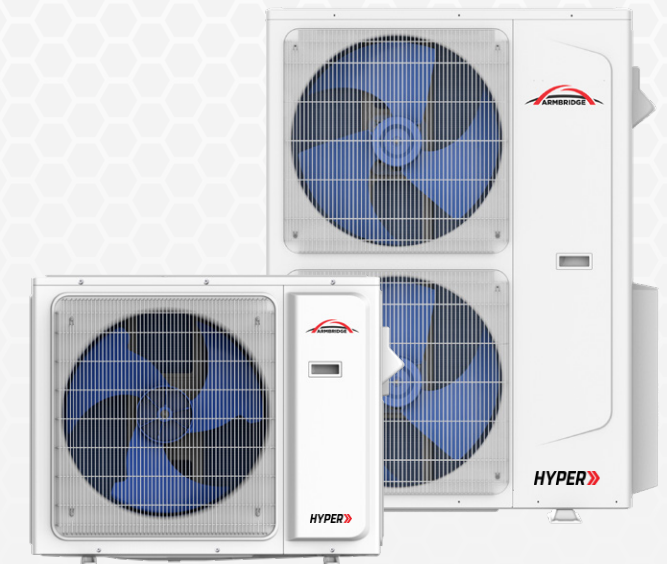


Hyper

Outdoor Model			AB-GTMH18-230VO	AB-GTMH24-230VO	AB-GTMH36-230VO	AB-GTMH42-230VO
Power Supply	V-Ph-Hz		208~230-1-60	208~230-1-60	208~230-1-60	208~230-1-60
Cooling	Capacity (Min-Max)	Btu/h	18,000 (4,800-25,000)	24,000 (5,500-32,300)	36,000 (7,200-42,500)	42,000 (8,350-46,000)
	EER2	Btu/h	3.66	3.81	3.66	3.66
	SEER2	Btu/h	23.3	24	24	24
Heating	Capacity (Min-Max)	Btu/h	21,000 (5,000-26,000)	26,000 (5,850-36,000)	36,000 (7,600-52,000)	42,000 (8,450-53,000)
	HSPF2-4	Btu/h	11	10.5	11	10.5
	COP2	W/W	3.80	4.4	4.0	3.90
Outdoor Air Flow	CFM		2235	2353	4235	4235
Outdoor Side Noise Level	dB(A)		58	60	60	60
Outdoor Unit	Dimensions (WxDxH)	in	38.58x15.28x27.56	41.18x17.91x31.81	39.80x15.75x51.97	39.80x15.75x51.97
	Packing (WxDxH)	in	39.96x16.73x30.00	43.50x19.49x34.84	42.52x16.93x56.69	42.52x16.93x56.69
	Net Weight	lbs.	104.7/111.3	152.1/162.0	202.8/222.7	205.0/224.9
Refrigerant Type / Pre-charge Volume	oz		R32/49.4	R32/63.5	R32/88.2	R32/105.8
Refrigerant Piping	Liquid Side / Gas Side	in	1/4" / 3/8"	1/4" / 3/8"	1/4" / 3/8"	1/4" / 3/8"
	Max Refrigerant Pipe Length Indoor/Total	ft.	82/131	98/197	115/263	115/263
Ambient Temperature	Outdoor (Cooling)	°F	-13~ 126	-13~ 126	-13~ 126	-13~ 126
	Outdoor (Heating)	°F	-22~ 75	-22~ 75	-22~ 75	-22~ 75

Hyper Units:

Up to 5 **ARMBRIDGE** Indoor Multi-Zone Units can be connected to a single outdoor unit, reducing the number of outdoor units required. All indoor units can be controlled individually and do not need to be installed at the same time. The **ARMBRIDGE Hyper Heat** series offers dependable cooling with the capability to heat in ambient temperature as low as -22°F.

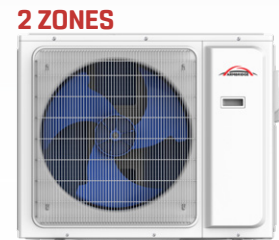


Combination Chart / REGULAR



Btu/h	Wall Mount	Duct	Ceiling Cassette	Floor Ceiling	One Way Cassette
7K	AB-GTM07WM-230VI				
9K	AB-GTM09WM-230VI	AB-GTM09DT-230VI	AB-GTM09CT-230VI	AB-GTM09FC-230VI	AB-GTM09CT1W-230VI
12K	AB-GTM12WM-230VI	AB-GTM12DT-230VI	AB-GTM12CT-230VI	AB-GTM12FC-230VI	AB-GTM12CT1W-230VI
18K	AB-GTM18WM-230VI	AB-GTM18DT-230VI	AB-GTM18CT-230VI	AB-GTM18FC-230VI	AB-GTM18CT1W-230VI
24K	AB-GTM24WM-230VI	AB-GTM24DT-230VI	AB-GTM24CT-230VI	AB-GTM24FC-230VI	

Model Name	Cooling						Heating						Refrigerant		Refrigerant Piping						Ambient Temperature	
	Min. Circuit Ampacity (MCA)	Max. Fuse Size	Capacity (range)	Input	Rated current	SEER2	EER2	Capacity (range)	Input	Rated current	COP	HSPF	Noise Level	Type	Liquid side	Gas side	Max. length for all rooms	Max. length for one indoor unit	Max. height elevation between indoor and outdoor	Max. height elevation between indoor units	Cooling	Heating
	A	A	Btu/h	W	A			Btu/h	W	A			db(A)		inch	inch	ft	ft	ft	ft	°F	°F
AB-GTMR18-230VO	15	20	17,700 (3,800-19,800)	1440	6.39	22	3.60	18,000 (4,200-22,000)	1390	6.17	3.8	10	54	R32	2x1/4"	2x3/8"	131	82	49	33	-13-125.6	-13-75.2
AB-GTMR24-230VO	20	30	24,000 (4,900-31,400)	1920	8.52	23	3.66	24,000 (5,200-32,000)	1760	7.76	4.0	10	57	R32	3x1/4"	3x3/8"	197	98	49	33	-13-125.6	-13-75.2
AB-GTMR30-230VO	26	40	30,000 (6,000-38,200)	2400	10.65	23	3.66	30,000 (6,300-36,000)	2250	9.98	3.9	10	58	R32	4x1/4"	4x3/8"	263	115	49	33	-13-125.6	-13-75.2
AB-GTMR36-230VO	29	45	36,000 (6,350-38,500)	2930	12.87	23	3.60	36,000 (7,000-43,000)	2640	11.59	4.0	10	59	R32	4x1/4"	4x3/8"	263	115	49	33	-13-125.6	-13-75.2
AB-GTMR42-230VO	32	45	42,000 (8,350-46,000)	3360	14.92	24	3.66	42,000 (8,450-53,000)	3160	14.00	3.9	10.5	60	R32	4x1/4"	4x3/8"	263	115	49	33	-13-125.6	-13-75.2

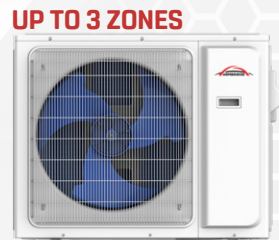


AB-GTMR18-230VO

2 ZONES

9K	9K
9K	12K
12K	12K

Note: 7K Wall Mount may be substituted for a 9K unit anywhere in this chart.



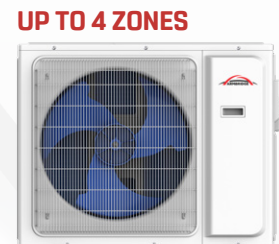
AB-GTMR24-230VO

2 ZONES

9K	9K
9K	12K
9K	18K
12K	12K
12K	18K
18K	18K

3 ZONES

9K	9K	9K
9K	9K	12K
9K	9K	18K
9K	12K	12K
12K	12K	12K



AB-GTMR30-230VO

2 ZONES

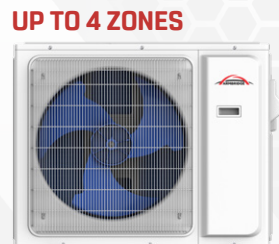
9K	9K
9K	12K
9K	18K
9K	24K
12K	12K
12K	18K
12K	24K
18K	18K
18K	24K

3 ZONES

9K	9K	9K
9K	9K	12K
9K	9K	18K
9K	9K	24K
9K	12K	12K
9K	12K	18K
9K	12K	24K
12K	12K	18K
12K	12K	24K

4 ZONES

9K	9K	9K	9K
9K	9K	9K	12K
9K	9K	9K	18K
9K	9K	9K	24K
9K	9K	12K	12K
9K	9K	12K	18K
9K	9K	12K	24K
9K	9K	18K	18K
9K	9K	18K	24K



AB-GTMR36-230VO

2 ZONES

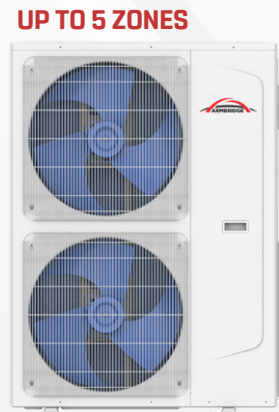
9K	9K
9K	12K
9K	18K
9K	24K
12K	12K
12K	18K
12K	24K
18K	18K
18K	24K
24K	24K

3 ZONES

9K	9K	9K
9K	9K	12K
9K	9K	18K
9K	9K	24K
9K	12K	12K
9K	12K	18K
9K	12K	24K
9K	18K	18K
9K	18K	24K
12K	12K	12K
12K	12K	18K
12K	12K	24K
12K	18K	18K
12K	18K	24K
18K	18K	18K

4 ZONES

9K	9K	9K	9K
9K	9K	9K	12K
9K	9K	9K	18K
9K	9K	9K	24K
9K	9K	12K	12K
9K	9K	12K	18K
9K	9K	12K	24K
9K	9K	18K	18K
9K	9K	18K	24K
9K	12K	12K	12K
9K	12K	12K	18K
9K	12K	12K	24K
9K	12K	18K	18K
9K	12K	18K	24K
12K	12K	12K	12K
12K	12K	12K	18K
12K	12K	12K	24K



AB-GTMR42-230VO

2 ZONES

9K	9K
9K	12K
9K	18K
9K	24K
12K	12K
12K	18K
12K	24K
18K	18K
18K	24K
24K	24K

3 ZONES

9K	9K	9K
9K	9K	12K
9K	9K	18K
9K	9K	24K
9K	12K	12K
9K	12K	18K
9K	12K	24K
9K	18K	18K
9K	18K	24K
12K	12K	12K
12K	12K	18K
12K	12K	24K
12K	18K	18K
12K	18K	24K
18K	18K	18K

4 ZONES

9K	9K	9K	9K
9K	9K	9K	12K
9K	9K	9K	18K
9K	9K	9K	24K
9K	9K	12K	12K
9K	9K	12K	18K
9K	9K	12K	24K
9K	9K	18K	18K
9K	9K	18K	24K
9K	12K	12K	12K
9K	12K	12K	18K
9K	12K	12K	24K
9K	12K	18K	18K
9K	12K	18K	24K
12K	12K	12K	12K
12K	12K	12K	18K
12K	12K	12K	24K

5 ZONES

9K	9K	9K	9K	9K
9K	9K	9K	9K	12K
9K	9K	9K	9K	18K
9K	9K	9K	9K	24K
9K	9K	9K	12K	12K
9K	9K	9K	12K	18K
9K	9K	9K	12K	24K
9K	9K	9K	18K	18K
9K	9K	9K	18K	24K
9K	12K	12K	12K	12K
9K	12K	12K	12K	18K
9K	12K	12K	12K	24K
9K	12K	18K	18K	18K
9K	12K	18K	18K	24K
12K	12K	12K	12K	12K
12K	12K	12K	12K	18K
12K	12K	12K	12K	24K

Combination Chart / HYPER



Btu/h	Wall Mount	Duct	Ceiling Cassette	Floor Ceiling	One Way Cassette
7K	AB-GTM07WM-230VI				
9K	AB-GTM09WM-230VI	AB-GTM09DT-230VI	AB-GTM09CT-230VI	AB-GTM09FC-230VI	AB-GTM09CT1W-230VI
12K	AB-GTM12WM-230VI	AB-GTM12DT-230VI	AB-GTM12CT-230VI	AB-GTM12FC-230VI	AB-GTM12CT1W-230VI
18K	AB-GTM18WM-230VI	AB-GTM18DT-230VI	AB-GTM18CT-230VI	AB-GTM18FC-230VI	AB-GTM18CT1W-230VI
24K	AB-GTM24WM-230VI	AB-GTM24DT-230VI	AB-GTM24CT-230VI	AB-GTM24FC-230VI	

Model Name	Cooling						Heating						Refrigerant		Refrigerant Piping						Ambient Temperature	
	Capacity (range)	Input	Rated current	SEER2	EER2		Capacity (range)	Input	Rated current	COP	HSPF	Noise Level	Type	Liquid side	Gas side	Max. length for all rooms	Max. length for one indoor unit	Max. height elevation between indoor and outdoor	Max. height elevation between indoor units	Cooling	Heating	
	Btu/h	W	A				Btu/h	W	A			db(A)		inch	inch	ft	ft	ft	ft	°F	°F	
AB-GTMH18-230VO	18,000 (4,800-25,000)	1440	6.40	23.3	3.66		21,000 (5,000-26,000)	1620	7.18	3.8	11	58	R32	2x1/4"	2x3/8"	131	82	49	33	-13-125	-22-75	
AB-GTMH24-230VO	24,000 (5,500-32,300)	1850	8.53	24	3.81		26,000 (5,850-36,000)	1730	8.70	4.4	10.5	60	R32	3x1/4"	3x3/8"	197	98	49	33	-13-125	-22-75	
AB-GTMH36-230VO	36,000 (7,200-42,500)	2880	12.65	24	3.66		36,000 (7,600-52,000)	2640	11.59	4.0	11	60	R32	4x1/4"	4x3/8"	263	115	49	33	-13-125	-22-75	
AB-GTMH42-230VO	42,000 (8,350-46,000)	3360	14.92	24	3.66		42,000 (8,450-53,000)	3160	14.00	3.9	10.5	60	R32	4x1/4"	4x3/8"	263	115	49	33	-13-125	-22-75	

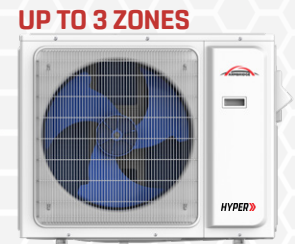


AB-GTMH18-230VO

2 ZONES

9K	9K
9K	12K
12K	12K

Note: 7K Wall Mount may be substituted for a 9K unit anywhere in this chart.



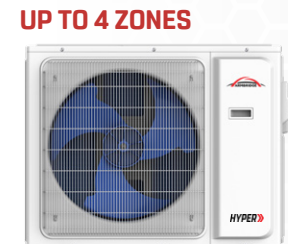
AB-GTMH24-230VO

2 ZONES

9K	9K
9K	12K
9K	18K
12K	12K
12K	18K
18K	18K

3 ZONES

9K	9K	9K
9K	9K	12K
9K	9K	18K
9K	12K	12K
9K	12K	18K
9K	12K	24K



AB-GTMH36-230VO

2 ZONES

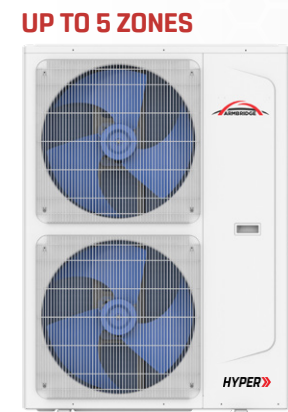
9K	9K
9K	12K
9K	18K
9K	24K
12K	12K
12K	18K
12K	24K
18K	18K
18K	24K
24K	24K

3 ZONES

9K	9K	9K
9K	9K	12K
9K	9K	18K
9K	9K	24K
9K	12K	12K
9K	12K	18K
9K	12K	24K
9K	18K	18K
9K	18K	24K
12K	12K	12K
12K	12K	18K
12K	12K	24K
12K	18K	18K
12K	18K	24K
18K	18K	18K

4 ZONES

9K	9K	9K	9K
9K	9K	9K	12K
9K	9K	9K	18K
9K	9K	9K	24K
9K	9K	12K	12K
9K	9K	12K	18K
9K	9K	12K	24K
9K	9K	18K	18K
9K	9K	18K	24K
9K	12K	12K	12K
9K	12K	12K	18K
9K	12K	12K	24K
9K	12K	18K	18K
9K	12K	18K	24K
12K	12K	12K	12K
12K	12K	12K	18K
12K	12K	12K	24K



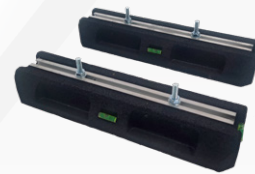
AB-GTMH42-230VO

2 ZONES

9K	9K
9K	12K
9K	18K
9K	24K
12K	12K
12K	18K
12K	24K
18K	18K
18K	24K
24K	24K

3 ZONES

9K	9K	9K
9K	9K	



AB-RF
Rubber Feet

1 set: Heavy-duty adjustable ground mounting set, installs directly onto concrete or leave unmounted. Adjustable wide frame fits most units. Includes built-in leveler tool to assist with mounting. 19.6x5x2.5 in.



AB-6FTEW
A/C Whips (Nonmetallic)

6 sets: 3/4 in. x 6 ft. 8/2 and 10/1 Non-Metallic Flexible Liquidtight A/C Electrical Whip with durable conduits designed for connecting HVAC units to power sources. Crafted with nonmetallic materials, they ensure safety, easy installation, and resistance to corrosion, providing reliable performance in various weather conditions.



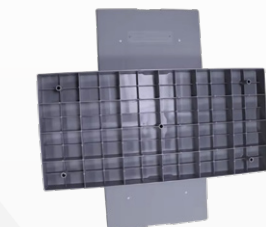
AB-DIS30-F
Disconnects

Enclosed Non-fused: Air conditioning disconnects for Residential and Light Commercial units. Metallic enclosure, enduring durability against harsh weather conditions for sustained performance.
Mian Ampere rating: 30/60AMP, 240V, 1Phase, 2 Pole, 3 Wire.

AB-DIS60-F
Disconnects

AB-CP
Condenser Pad

Antislip and shock-absorbing base for stabilizing load and avoid shaking. Uniform ribbing transfers load evenly and its thickened material not easily deformed. UV protected and weather resistant. 38x18x3 in.



AB-WB **AB-WB-GT**
Zinc Coated Steel Wall Bracket 304 Stainless Steel Wall Bracket

4 sets: Versatile Outdoor Wall Mounting Bracket for Ductless Mini Split Heat Pump Systems. Adjustable to fit 9,000 BTU - 36,000 BTU units with Maximum weight of 550 lbs. Vibration control and shock absorbers are built-in, backstops are adjustable. Foldable design with all necessary hardware included. 21.6x17.7x33.4 in.



AB-GSB-GT
Ground Stand Bracket

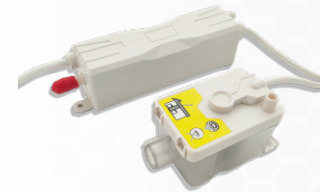
3 sets, Zinc Coated Steel: Compatible with most mini split heat pump systems. Can support over 330lbs of weight and can easily be placed outside your home or business. Weather proof design for long lasting support. 39.3x23.6x15.75 in.



AB-13FT-LCKW
13 Feet Long, Duct. White

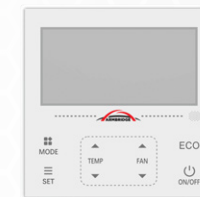
AB-13FT-LCKB
13 Feet Long, Duct. Black

11 pcs. UniversalLine Set Covers: Fits most brands of residential central air conditioner and mini-split systems. Made from high quality PVC, suitable for any weather and long term outdoor use. The Decorative PVC Line Covers keep refrigeration pipes and cores organized and protects your AC lines from fading, cracking, or deforming.



AB-C-PUMP-24P
Condensate Pump

This high-performance condensate pump offers ultra-silent 17dB operation and a powerful 15m discharge head. Featuring a double control design, built-in level-meter, and overflow alarm, it ensures reliable, automated water drainage with maximum safety for any mini-split system.



AB-WT24VW
Smart Wired Thermostat

The Armbridge 24V Wired Thermostat features a sleek design and a clear digital LCD screen. Its integrated receiver allows for direct communication with remote controllers and smart devices, offering effortless flexibility for any home's temperature control.



ARMBRIDGE LINE SETS
Installation Kit

The HVAC Line Set Installation Kit is a complete solution for efficient air conditioning installation. It includes a 4/16 AWG connecting cable, rubber drain hose, bandage tape, wall sleeve, and neoprene for durability and convenience. The copper line set is 99.9% pure (ASTM B-280), ensuring optimal performance and reliability. Pre-insulated (ASTM D154) for energy efficiency, it is UV and UV-C protected to withstand outdoor elements. Pre-flared ends simplify connections, making installation faster and hassle-free. This comprehensive kit provides the quality and reliability needed for a smooth HVAC setup, ensuring long-lasting performance.

Line Set Model	Line Set Diameter Liquid/Gas Side	Copper Line Length	4/16 AWG Cable
AB1-16FT	1/4" - 3/8"	16 FT	18 FT
AB1-25FT	1/4" - 3/8"	25 FT	29.5 FT
AB1-50FT	1/4" - 3/8"	50 FT	55.8 FT
AB2-16FT	1/4" - 1/2"	16 FT	18 FT
AB2-25FT	1/4" - 1/2"	25 FT	29.5 FT
AB2-50FT	1/4" - 1/2"	50 FT	55.8 FT
AB3-16FT	3/8" - 5/8"	16 FT	18 FT
AB3-25FT	3/8" - 5/8"	25 FT	29.5 FT
AB3-50FT	3/8" - 5/8"	50 FT	55.8 FT
AB4-25FT	3/8" - 3/4"	25 FT	29.5 FT
AB4-50FT	3/8" - 3/4"	50 FT	55.8 FT
AB6-25FT	3/8" - 7/8"	25 FT	29.5 FT
AB6-50FT	3/8" - 7/8"	50 FT	55.8 FT
AB7-25FT	1/4" - 5/8"	25 FT	29.5 FT

STRENGTHENING EVERY CONNECTION IN HVAC

For Technical Support, reach out to our team Monday through Friday at 1-888-293-9252.
For general inquiries, call 800-910-7349 or write to us at: info@armbridge.us



04.10.2026